



SNS COLLEGE OF TECHNOLOGY

**An Autonomous Institution
Coimbatore - 35**

Accredited by NBA – AICTE and Accredited by NACC – UGC with ‘A++’ Grade
Approved by AICTE , New Delhi and Affiliated to Anna University , Chennai.

DEPARTMENT OF AGRICULTURAL ENGINEERING

23AGT204 – SURVEYING AND LEVELLING

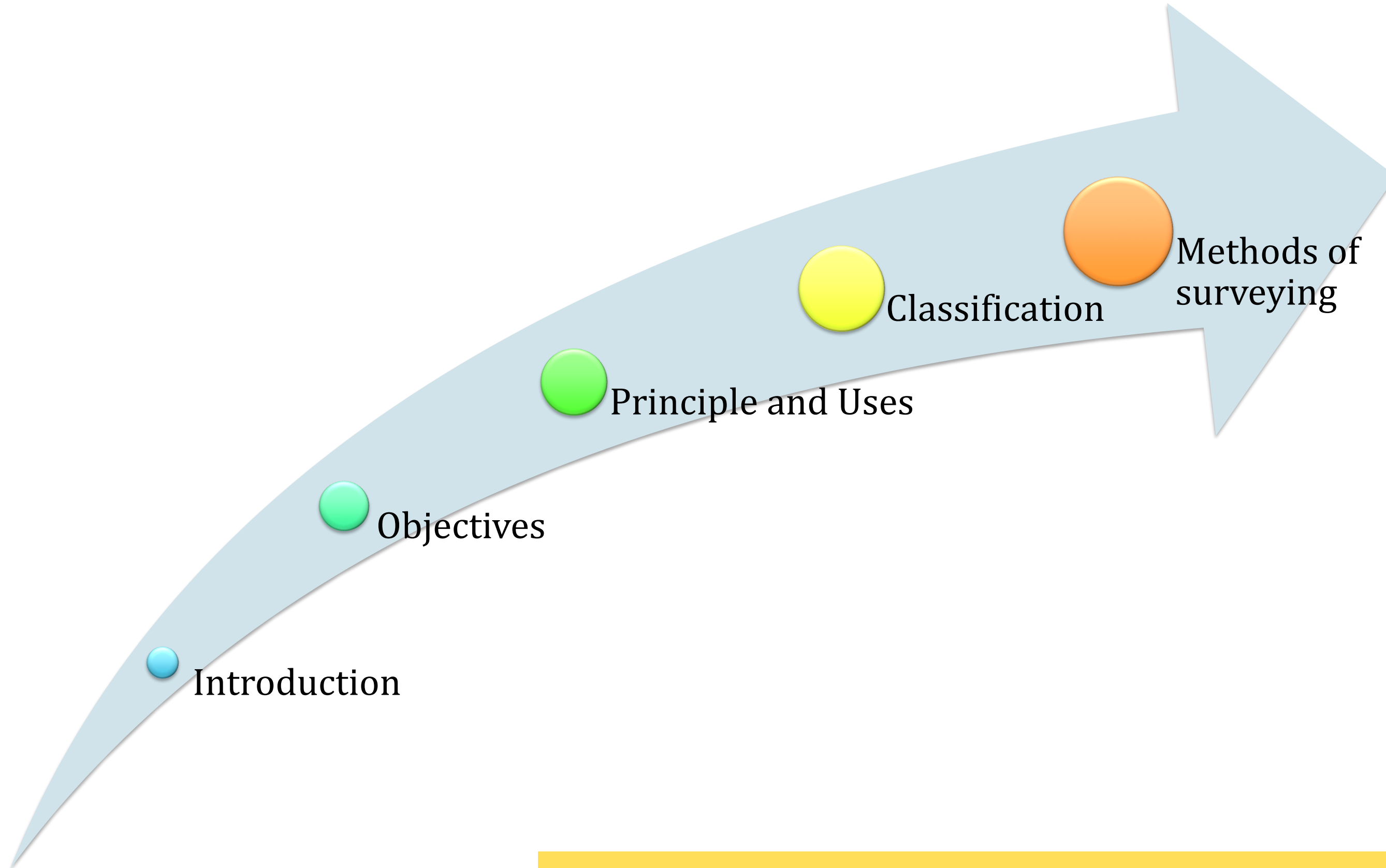
II – YEAR III SEMESTER

UNIT 1 – OVERVIEW AND CLASSIFICATION OF SURVEYING

TOPIC 4 – TYPES OF CHAIN

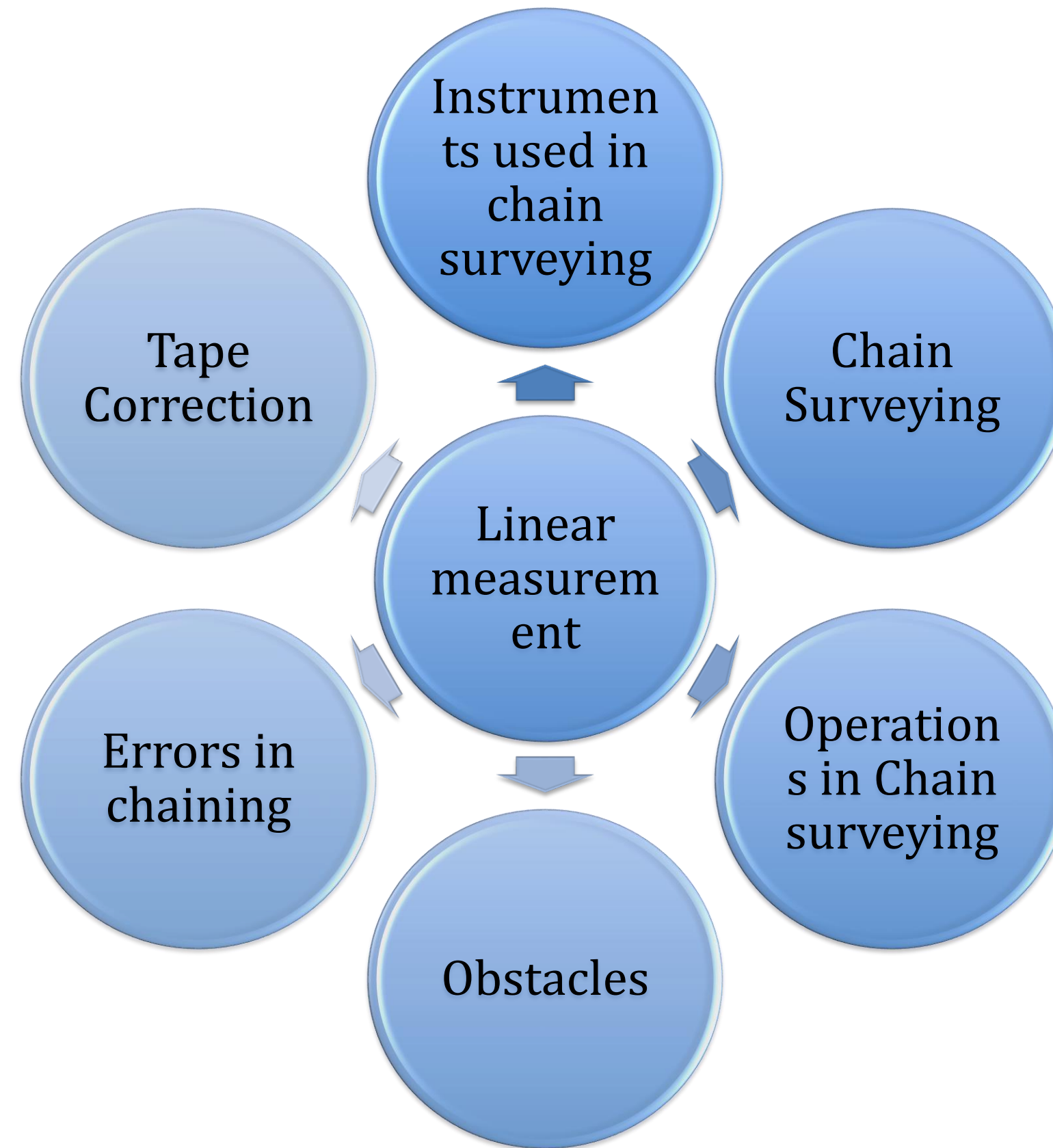


Last Class Review





Linear Measurement





Introduction

What is Linear measurement?

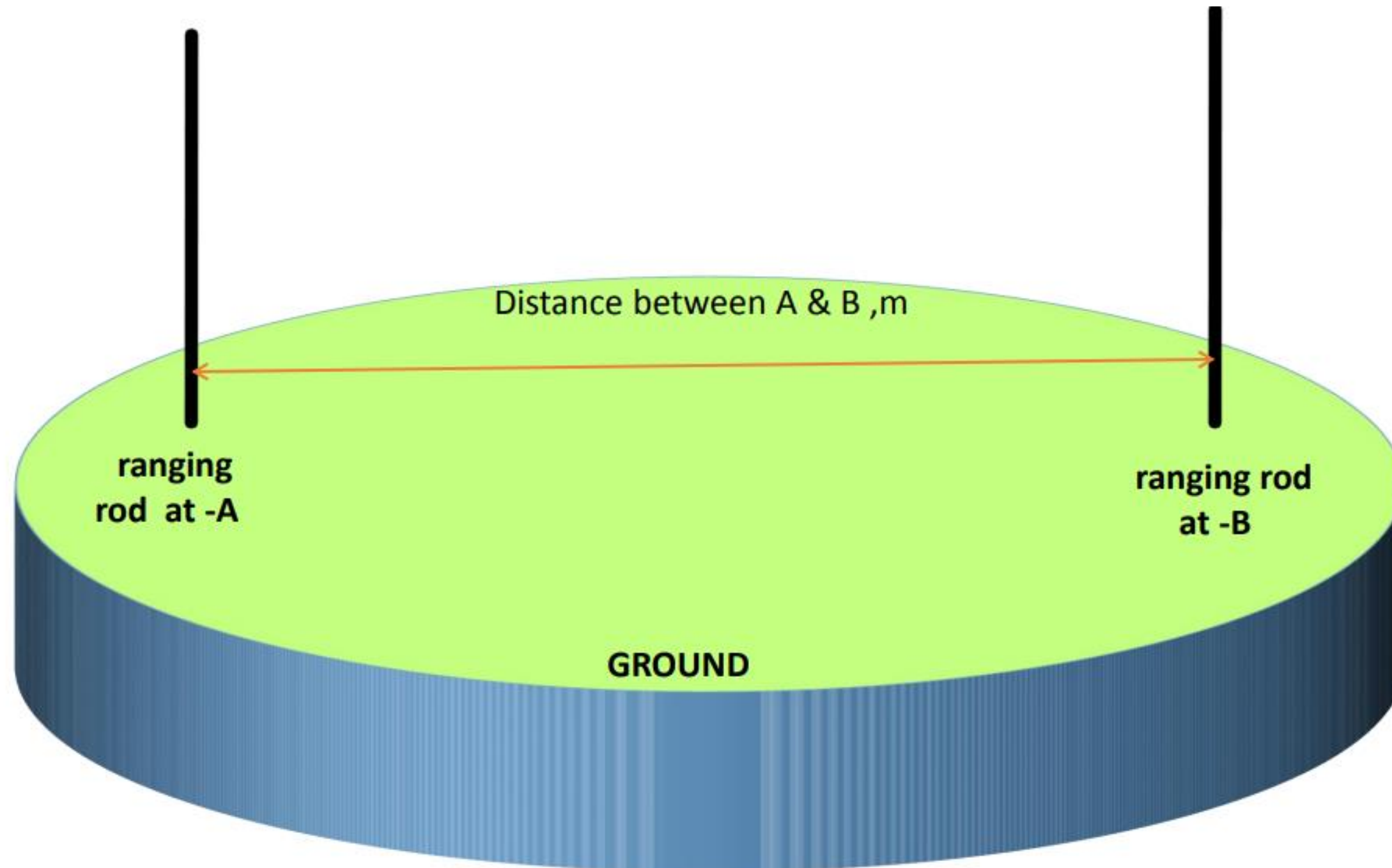


Measurement of horizontal distance between two points on the surface of the earth.



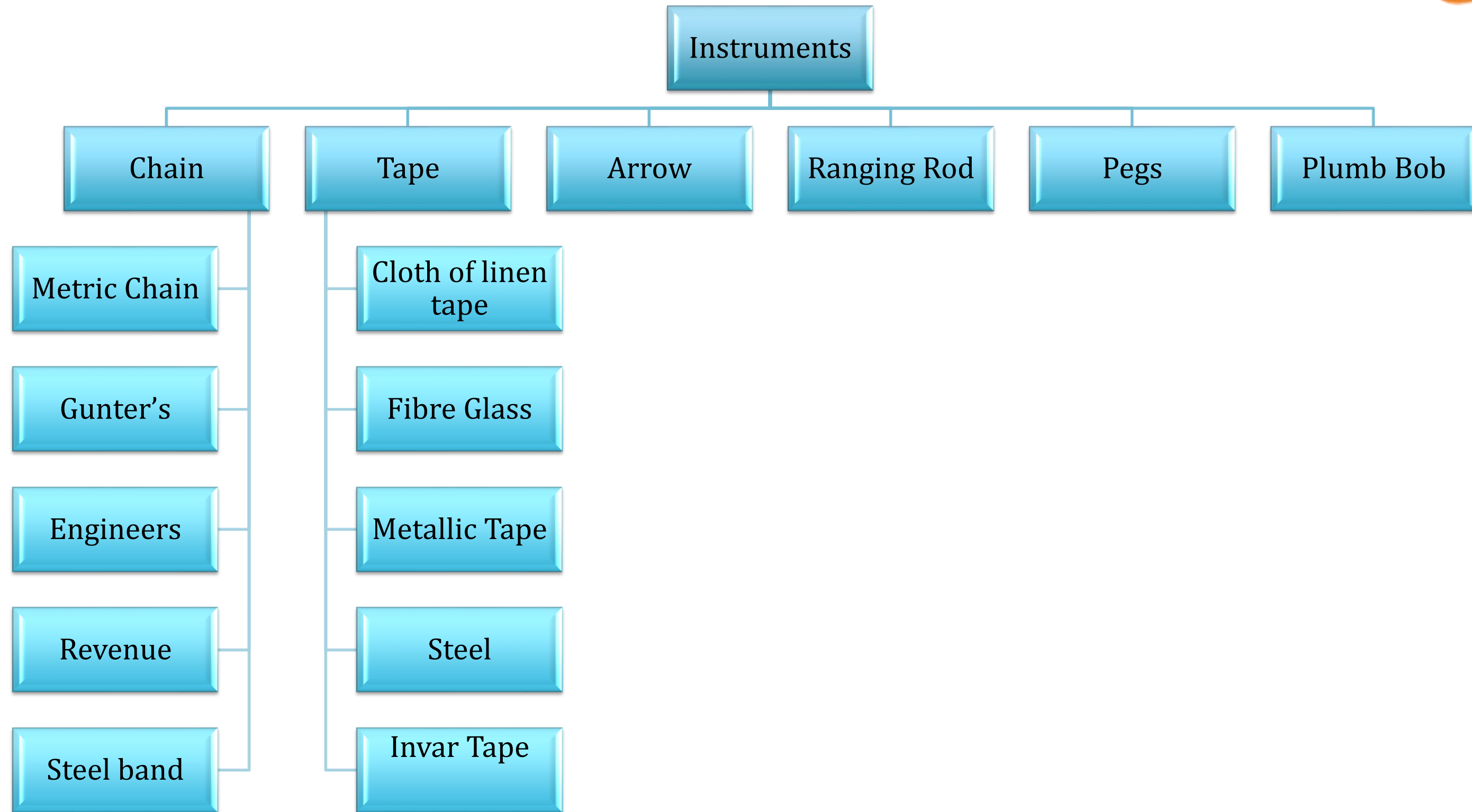


Linear Measurement





Instruments used





Assessment



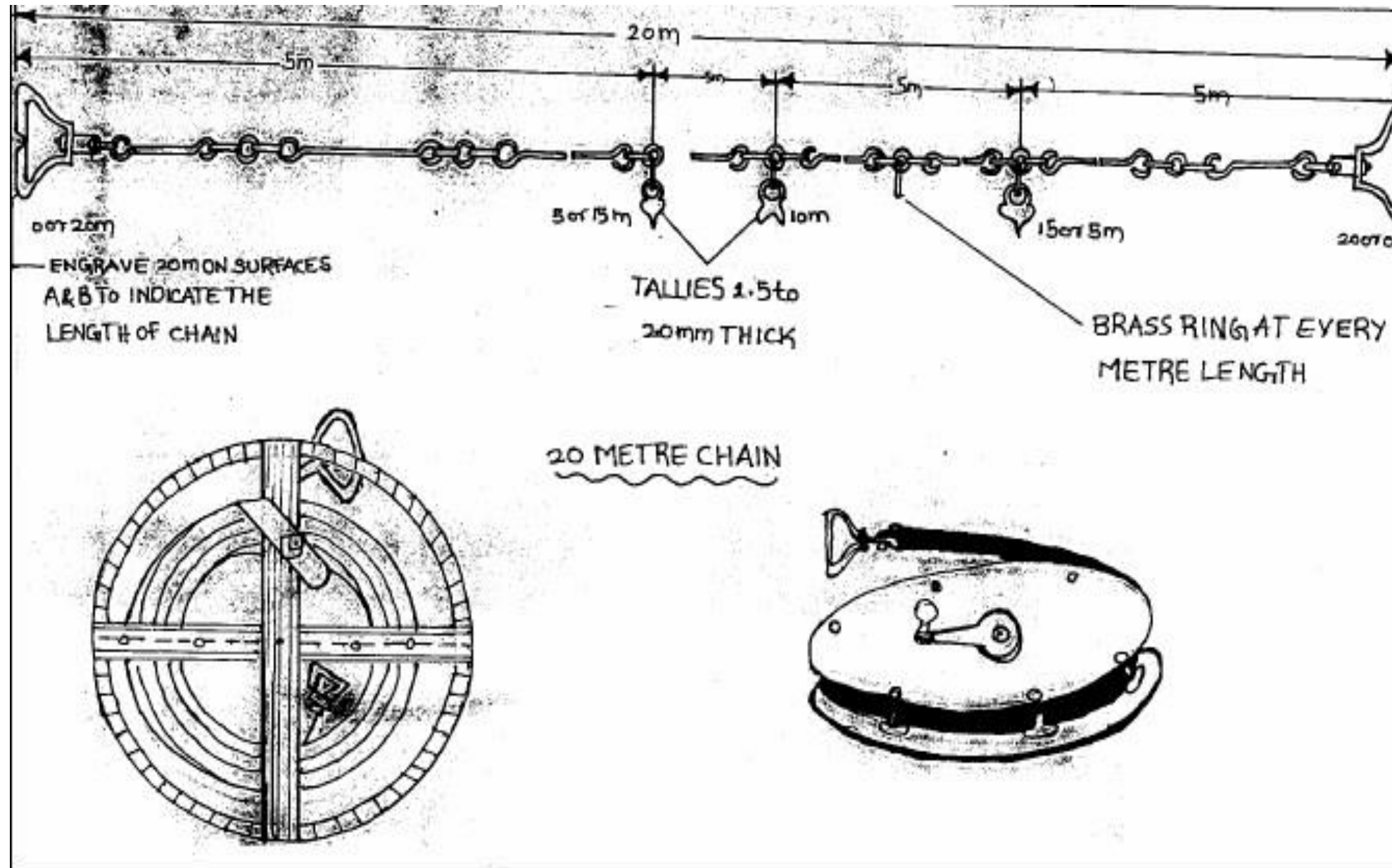
- Differentiate between plane and geodetic surveying
- Which is most accurate one





Metric Chain

- It Consists of galvanized mild steel wire of 4mm diameter known as link.
- It is available in 20m, 30m, 50m length which consists of 100 links.





Gunter's and Engineer's Chain



Gunter's Chain :

- A 66 feet long chain consists of 100 links, each of 0.66 feet, it is known as Gunter's chain.
- This chain is suitable for taking length in miles.

Engineer's Chain :

- A 100 feet long chain consisting of 100 links each of 1 foot is known as engineer's chain.
- This chain is used to measure length in feet and area in sq.yard.



Revenue and Steel Band Chain



Revenue Chain :

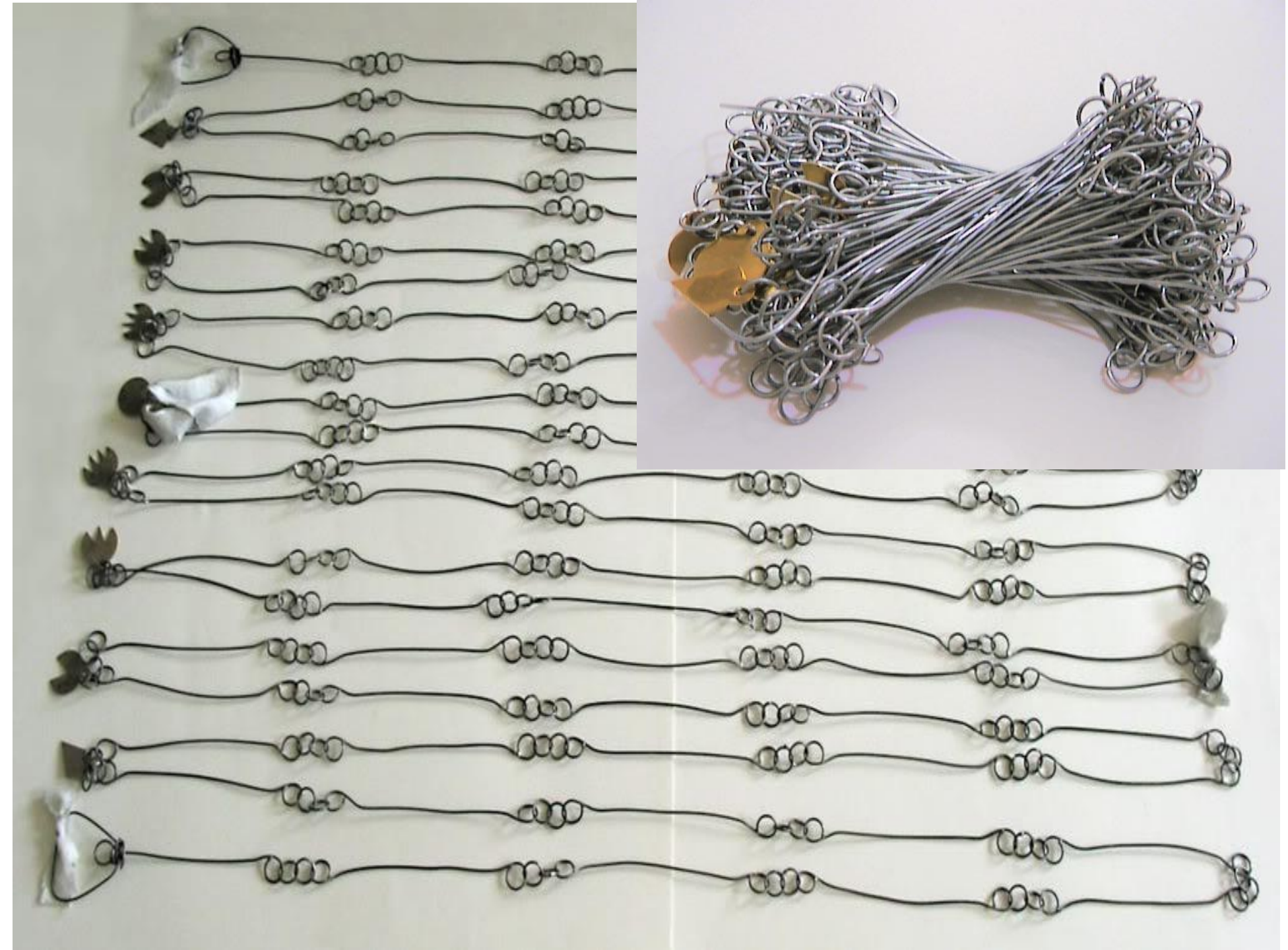
- It is 33 feet long chain consisting of 16 links.
- This chain is used for distance measurements in feet & inches for smaller areas.

Steel Band chain :

- It is more preferable than chains because they are more accurate, but the disadvantage is that they get broken easily and are difficult to repair in the field.
- They are 20 or 30 m long, 12 to 16 mm wide and 0.3 to 0.6 mm thick.

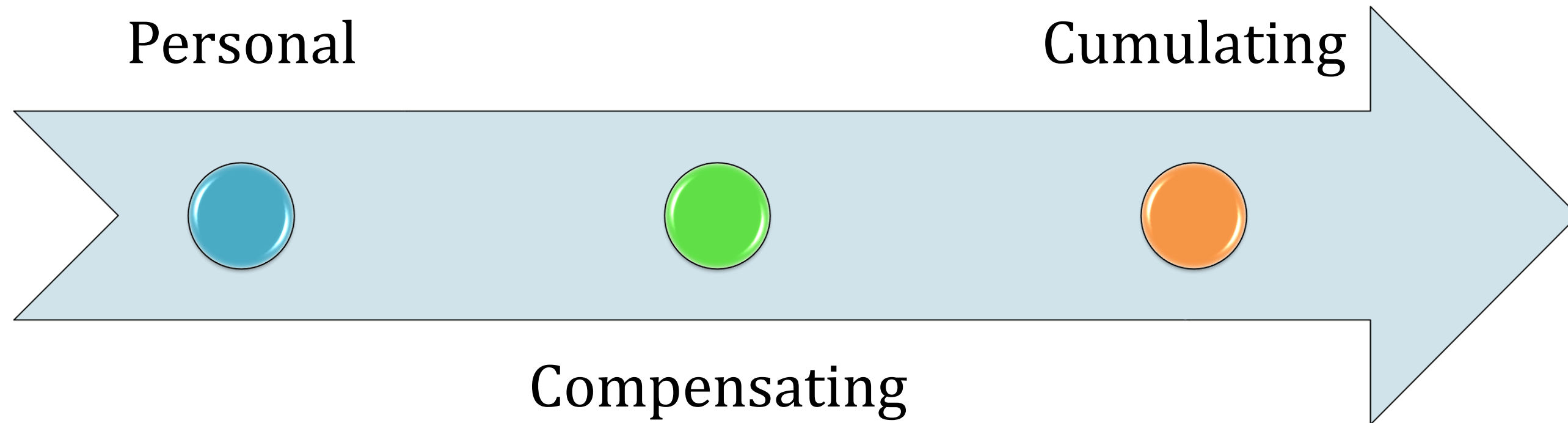


Chains



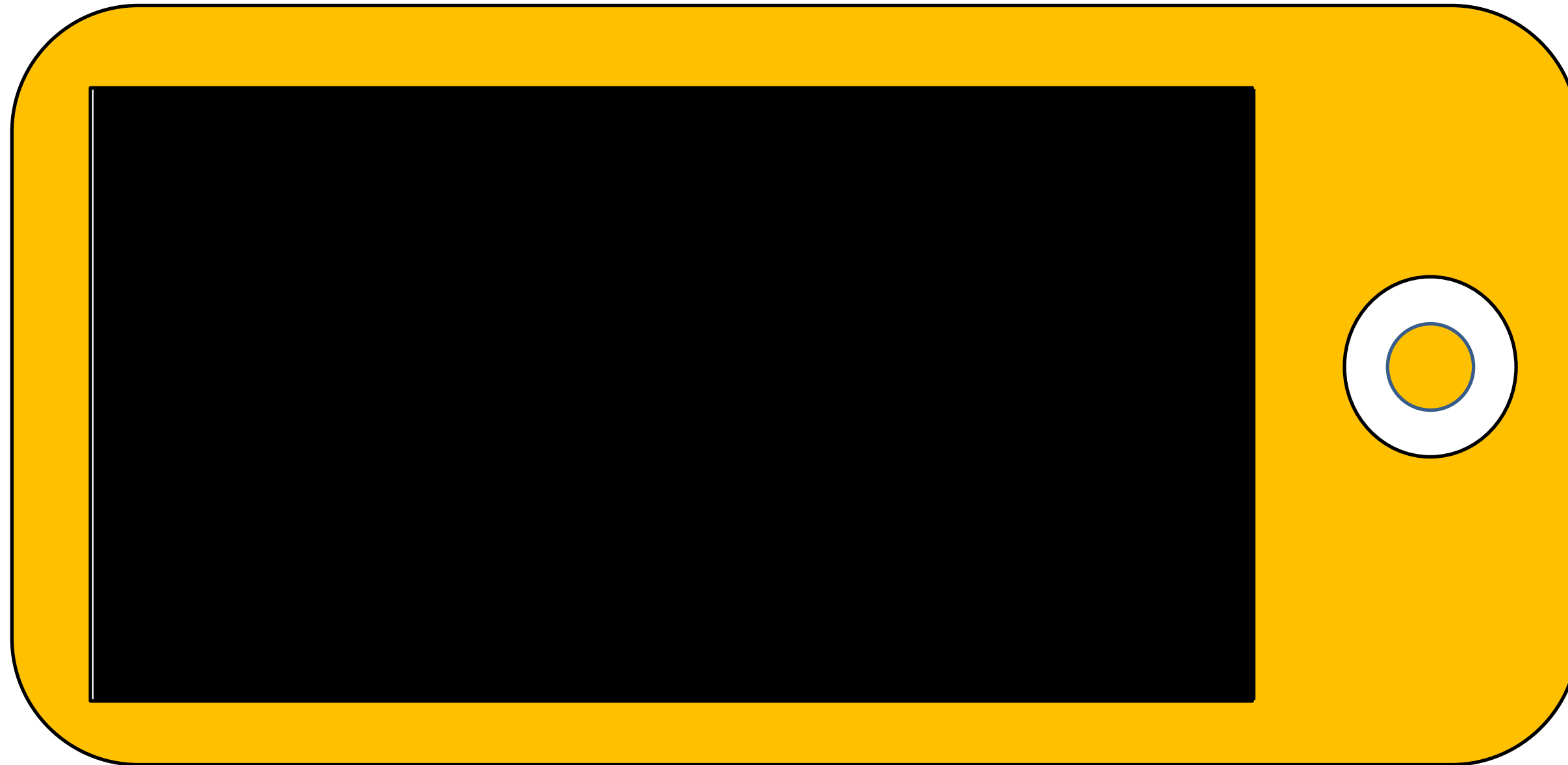


Errors in Chain





Reference Videos





See You at Next Class!!!!