



SNS COLLEGE OF TECHNOLOGY

(An Autonomous Institution)

Approved by AICTE, New Delhi, Affiliated to Anna University, Chennai

Accredited by NAAC-UGC with 'A++' Grade (Cycle III) &

Accredited by NBA (B.E - CSE, EEE, ECE, Mech & B.Tech.IT)

COIMBATORE-641 035, TAMIL NADU

DEPARTMENT OF MATHEMATICS



Week 3 018-348

7. $1^1, 2^2, 3^3, 4^4, 5^5$
 $1, 4, 27, 256, 3125$

8. $285, 253, 221, 189, 157$
 $-32, -32, -32, -32$
 $189 - 32 = 157$

285	253	221
45)	21	32
32	32	157

9. $8, 3, 11, 14, 25, 39$
 $7, 12 \times 3 + 4 = 11, 25 + 14 = 39$

10. $3, 8, 27, 112, 565, 3386$
 $(3 \times 2) + 2 = 8, (8 \times 3) = 27, (112 \times 5) + 15 = 565$
 $2^3 + 1, 3^3 + 1, 4^3 + 1, 5^3 + 1 = 125 + 1 = 126$

11. $2, 9, 28, 65, 126$
 $7, 19, 37$

12. $31, 13, 45, 54, 36, 63$ (answer)

13. $8, 27, 64, 125$
 $2^3, 3^3, 4^3, 5^3 = 125$

Week 3 019-347

19 Sunday 19/01/2020

14. $6, 9, 12, 15, 18, 21$
 $+3, +3, +3, +3, 18 + 3 = 21$

15. $107, 97, 82, 62, 37$
 $-10, -15, -20, -25, 62 - 25 = 37$



SNS COLLEGE OF TECHNOLOGY

(An Autonomous Institution)

Approved by AICTE, New Delhi, Affiliated to Anna University, Chennai

Accredited by NAAC-UGC with 'A++' Grade (Cycle III) &

Accredited by NBA (B.E - CSE, EEE, ECE, Mech & B.Tech.IT)

COIMBATORE-641 035, TAMIL NADU

DEPARTMENT OF MATHEMATICS



Week 4 025-340

8. ADG, GILM, MPS, SVY
 HIJKL, NOPQR, TUVWX
 CD, EG, IS

9. BMO, EOQ, HQS, KSO
 HI, KL, NO

10. CGK, ETP, GNO, IPX
 D, F, H

11. NOAB, PBC, PQCD, QRE
 EF, HI, KL

12. KDW, MGT, OTQ, QMN
 L, N, P

13. ADH, DGK, GTN, IMQ
 BC, IS, EF, LM, HI, OP

Week 4 026-340

26 Sunday 26.01.2020

14. DFI, KMP, RIW, YAD
 EFGHIJ, LMNOPQ, STUVWX

15. WV|TS|QPN|KJ|HG
 LM, KL, IS, HI

19+ 13+
 3 3
 22 16



SNS COLLEGE OF TECHNOLOGY

(An Autonomous Institution)

Approved by AICTE, New Delhi, Affiliated to Anna University, Chennai

Accredited by NAAC-UGC with 'A++' Grade (Cycle III) &

Accredited by NBA (B.E - CSE, EEE, ECE, Mech & B.Tech.IT)

COIMBATORE-641 035, TAMIL NADU

DEPARTMENT OF MATHEMATICS



Reasoning Series:

- $\overset{BC}{A} \overset{EF}{D} \overset{HI}{G}, \boxed{A} \overset{BC}{O} \overset{EF}{B} \overset{HI}{N}, \overset{BC}{D} \overset{EF}{R} \overset{HI}{E}, \overset{BC}{G} \overset{EF}{U} \overset{HI}{H}, \overset{BC}{T} \overset{EF}{X} \overset{HI}{K}$
- $\overset{W}{W} \overset{T}{T} \overset{P}{P} \overset{M}{M} \overset{I}{I} \overset{F}{F} \overset{B}{B}, \boxed{Y}, \boxed{U}$
 $\overset{D}{D} \overset{H}{H} \overset{E}{E} \overset{Z}{Z} \overset{A}{A} \quad \overset{V}{V} \overset{W}{W} \overset{X}{X}$
- $\overset{C}{B} \overset{D}{M} \overset{E}{R} \overset{F}{G}, \overset{C}{D} \overset{E}{L} \overset{F}{T}, \overset{C}{F} \overset{D}{K} \overset{E}{V}, \overset{C}{H} \overset{D}{J} \overset{E}{X}, \boxed{J} \overset{C}{I} \overset{D}{Z} \overset{E}{L}$
- $\overset{X}{X} \overset{Y}{Y} \overset{Z}{Z} \overset{C}{C} \overset{B}{B} \overset{A}{A} \overset{U}{U} \overset{V}{V} \overset{W}{W} \overset{F}{F} \overset{E}{E}, \boxed{D} \overset{R}{R} \overset{S}{S} \overset{T}{T}$
- $\overset{M}{M} \overset{N}{N} \overset{O}{O} \overset{A}{A} \overset{B}{B} \overset{C}{C} \overset{P}{P} \overset{Q}{Q} \overset{R}{R} \overset{D}{D} \overset{E}{E} \overset{F}{F} \overset{S}{S} \overset{T}{T} \overset{U}{U}, \boxed{G}, \overset{H}{H} \overset{I}{I}$
- $\overset{G}{D} \overset{H}{E} \overset{I}{F}, \overset{K}{H} \overset{L}{I} \overset{M}{J}, \overset{P}{M} \overset{Q}{N} \overset{R}{O}, \boxed{S} \overset{T}{T} \overset{U}{U}$
- $\overset{P}{W} \overset{Q}{V}, \overset{R}{P} \overset{S}{O}, \overset{T}{I} \overset{U}{H}, \overset{V}{B} \overset{W}{A}, \boxed{U} \overset{I}{I}$
 $\overset{P}{P} \overset{Q}{Q} \overset{R}{R} \overset{S}{S} \overset{T}{T} \overset{U}{U} \overset{V}{V} \overset{W}{W} \overset{X}{X} \overset{Y}{Y} \overset{Z}{Z} \overset{A}{A} \overset{B}{B} \overset{C}{C} \overset{D}{D} \overset{E}{E} \overset{F}{F} \overset{G}{G} \overset{H}{H} \overset{I}{I} \overset{J}{J} \overset{K}{K} \overset{L}{L} \overset{M}{M} \overset{N}{N} \overset{O}{O} \overset{P}{P} \overset{Q}{Q} \overset{R}{R} \overset{S}{S} \overset{T}{T} \overset{U}{U} \overset{V}{V} \overset{W}{W} \overset{X}{X} \overset{Y}{Y} \overset{Z}{Z}$
- $\overset{Z}{Z} \overset{T}{T} \overset{W}{W}, \overset{Y}{Y} \overset{S}{S} \overset{V}{V}, \overset{X}{X} \overset{R}{R} \overset{U}{U}, \boxed{W} \overset{Q}{Q} \overset{T}{T}$
- $\overset{H}{D} \overset{I}{F}, \overset{H}{G} \overset{I}{J}, \overset{K}{K} \overset{L}{M}, \overset{O}{N} \overset{P}{Q}, \overset{R}{R} \overset{S}{T}, \boxed{U} \overset{V}{X}$
 $\overset{E}{E} \quad \overset{L}{L} \quad \overset{S}{S} \quad \overset{V}{V}$

2020

JANUARY						
W	T	F	S	S	S	S



SNS COLLEGE OF TECHNOLOGY

(An Autonomous Institution)

Approved by AICTE, New Delhi, Affiliated to Anna University, Chennai

Accredited by NAAC-UGC with 'A++' Grade (Cycle III) &

Accredited by NBA (B.E - CSE, EEE, ECE, Mech & B.Tech.IT)

COIMBATORE-641 035, TAMIL NADU

DEPARTMENT OF MATHEMATICS



Week 5 030-330 Thursday 28/01/2020

10. G₁, I, L, P, U
JK, QPST
M, MNO

11. A, E, I, M, Q, U
FGH, RCD, NOP

12. B, K, S, J, T, F, L, U, H, V, J, G, W
C, G, I

13. A, B, D, G, K
C, EF, HIJ

14. V, W, R, T, U, P, R, S, N, P, Q, L
Q, O, M
U, S, Q

15. R, M, I, F, D, C
GHI, JKL, E

16. G, I, D, J, I, A, P, X, Y, U, J
EFGH, JKLMNO, QRSTUVWX, ZABCDEFGHI
EF, BC, YZ, VW

17. W, V, U, T, S, R, Q, P, O, N, M, L
ST, PR



SNS COLLEGE OF TECHNOLOGY

(An Autonomous Institution)

Approved by AICTE, New Delhi, Affiliated to Anna University, Chennai

Accredited by NAAC-UGC with 'A++' Grade (Cycle III) &

Accredited by NBA (B.E - CSE, EEE, ECE, Mech & B.Tech.IT)

COIMBATORE-641 035, TAMIL NADU

DEPARTMENT OF MATHEMATICS



18. P, M, J, G, D D
NO KL EF

19. AA, DB, IC, PD, YE
BC EFGH JKLMNO QRSTUVWX

20. T, R, O, M, J, H, E
N I KL FG

21. ABC, BDF, CFI, DAL
DE JK GH

22. A, C, E, G, I
D B F H

23. ZXV TRP NUTH FD B (VPHB)
G C

24. ac ega c ega ce g (ecag)

25. cc accb/c caccb/ccaccb (aac)

26. zyx w w/x yz z y | xwwx yz (wxyz)

27. a b n c b/a b n c b/a b n c b (bcabab)

28. b a a b | b a a b | b a a b | b a a b (bbaab)

29. m a n m a n | m a n | m f a n m a n (aammnn)

2020



SNS COLLEGE OF TECHNOLOGY

(An Autonomous Institution)

Approved by AICTE, New Delhi, Affiliated to Anna University, Chennai

Accredited by NAAC-UGC with 'A++' Grade (Cycle III) &

Accredited by NBA (B.E - CSE, EEE, ECE, Mech & B.Tech.IT)

COIMBATORE-641 035, TAMIL NADU

DEPARTMENT OF MATHEMATICS



30. m b b m a a m b a m a a m b b (mabam)

31. d n n m m l l m m n n d (nmmn)

32. a b a a b a a b a a b a (ababa)

33. n n m m n n m m n n m m n n m m (nmmn)

Reasoning \Rightarrow coding and decoding

ETY
5 10 15 20 25

Opposite letters:

A - Z. G.T. Road Kamala Prasad
 Boy Honey Singh LOVE
 Indian Rails MaN
 JaQ
 Dew
 FatU

2 Sunday 02.02.2020

Ex: $L = 12 + 15 = 27 \Rightarrow O$ (Adding opposite letters sum is 27)

1. If $A=1$, PAT = 37, then TAP = 37
 $PAT = 16 + 1 + 20 = 37$ $20 + 1 + 16 = 37$

2. If $D=4$, BAD = 7, Then ANT = 35
 $2 + 1 + 4 = 7$ $1 + 14 + 20 = 35$



SNS COLLEGE OF TECHNOLOGY

(An Autonomous Institution)

Approved by AICTE, New Delhi, Affiliated to Anna University, Chennai

Accredited by NAAC-UGC with 'A++' Grade (Cycle III) &

Accredited by NBA (B.E - CSE, EEE, ECE, Mech & B.Tech.IT)

COIMBATORE-641 035, TAMIL NADU

DEPARTMENT OF MATHEMATICS



3. If C=3, FEAR=30, Then HAIR = 36
 $5+2+1+18=30$ $8+1+9+18=36$

4. If X=26, NET=39, Then NUT = 55
 $14+5+20=39$ $14+21+20=55$

5. If F=6, MAT=34, Then CAR = 22
 $13+1+20=34$ $3+1+18=22$

6. If RAMAN and DINESH
 1 2 3 4 5 6 7 5 4 8 9
 Then, HAMAM = 92323

7. If RED is coded as 6720, then
 GREEN would be 1677209
 $RED = (18+2)(5+2)(4+2) = 2076 \Rightarrow 6720$
 18 5 4
 GREEN = 1677209
 7, 18, 5, 5, 14

8. KASHMIR written as 8142753
 Then RINSHAK is 3572218

9. If BROTHER ; SISTER then
 2 4 5 6 7 8 4 9 1 9 6 8 4
 ROBBERS is 4522849

2020

FEBRUARY						
W	M	T	W	T	F	S
6	7	8	9	10	11	12
13	14	15	16	17	18	19
20	21	22	23	24	25	26
27	28	29	30	31		



SNS COLLEGE OF TECHNOLOGY

(An Autonomous Institution)

Approved by AICTE, New Delhi, Affiliated to Anna University, Chennai

Accredited by NAAC-UGC with 'A++' Grade (Cycle III) &

Accredited by NBA (B.E - CSE, EEE, ECE, Mech & B.Tech.IT)

COIMBATORE-641 035, TAMIL NADU

DEPARTMENT OF MATHEMATICS



10. If CLOUD and RAIN then AROUND
59432 1678 **614332**

11. If GARDEN, WATER then WARDEN
325764 92165 **925764**

12. If DELHI, CALCUTTA then CALICUT
73541 82589662 **8251896**

13. If RUSH is 66 then GIRL is 46.
RUSH = $18 + 21 + 19 + 8 = 66$ GIRL = $7 + 9 + 8 + 12 = 46$

14. If Love is 27 then COME is 18.
LOVE = $12 + 15 + 22 + 5 = 54$ COME = $3 + 15 + 13 + 5 = \frac{36}{2} = 18$

15. If HOSPITAL, then Postal is
32574618 **725618**

16. If CAT is 3120 then NAVIN = 141222914
3120

17. If EDITION, then TIDE
3891965 **1983**

18. If PREMA then RAMA
96731 **6131**

2020



SNS COLLEGE OF TECHNOLOGY

(An Autonomous Institution)

Approved by AICTE, New Delhi, Affiliated to Anna University, Chennai

Accredited by NAAC-UGC with 'A++' Grade (Cycle III) &

Accredited by NBA (B.E - CSE, EEE, ECE, Mech & B.Tech.IT)

COIMBATORE-641 035, TAMIL NADU

DEPARTMENT OF MATHEMATICS



19. If UNIVERSITY, then TRUSTY
 1273948756 541856

20. If BUILDING and RIVER then BRIDGE
 A1527596 85308 485760

21. If MONKO then, KLJMN be
 57637 34256

MONKO = 13, 15, 14, 12, 15 adding 1 57637
 4 6 5 2 6

KLJMN = 11, 12, 10, 13, 14 adding 1 34256
 2 3 1 4 5

22. Let, J=1, K=2, L=5, M=7, N=11, O=13
 P=17. Find the letter to be inserted in the
 box in the relation given:
 $(N \times \text{?} + M) \div K = 31$ L
 $(11 \times 5 + 7) \div 2 = 31$
 $(55 + 7) \div 2 = 31$

23. If S=19, Sun=54 and Cake=20, then
 mistake = 78 mistake = 13+9+19+
 Sun = 19+21+14 = 54 Cake = 3+1+11+5 = 20 78
 2+1+11+5

24. If D=A, DOG=26, ANIMAL ~~30~~
 DOG = 4+15+7 = 26 1+14+9+13+1+2 = 50



SNS COLLEGE OF TECHNOLOGY

(An Autonomous Institution)

Approved by AICTE, New Delhi, Affiliated to Anna University, Chennai

Accredited by NAAC-UGC with 'A++' Grade (Cycle III) &

Accredited by NBA (B.E - CSE, EEE, ECE, Mech & B.Tech.IT)

COIMBATORE-641 035, TAMIL NADU

DEPARTMENT OF MATHEMATICS



25. A = 26, X-RAY = 40, WHAT = 56.
 $3+9+26+2=40$ WHAT = $4+19+26+7=56$

26. If A = 1, AND = 19, then ANT = 35
 AND = $1+14+4=19$ ANT = $1+14+20=35$

27. E = 5, PEN = 35, PAGE = 29
 PEN = $16+5+14=35$ PAGE = $16+1+7+5=29$

28. CAB = 6, Leg = 6 then MAP is 3
 $CAB = 3+1+2=6$ $12+5+7=24=2+4=6$, MAP = $13+1+16=30=3$

29. If BALL = 27, CANE = 23, then YELL = 54
 BALL = $2+1+12+12=27$ CANE = $3+1+14+5=23$ YELL = $25+5+12+12=54$

30. HIM = 60, HER = 62, then HIS = 72
 HIM = $8+9+13=30 \times 2=60$ HER = $8+5+18=31 \times 2=62$ HIS = $8+9+19=36 \times 2=72$

31. If PER = 78, PEN = 70, then OWL = 100
 PER = $16+5+18=39 \times 2=78$ PEN = $16+5+14=35 \times 2=70$ OWL = $15+23+12=50 \times 2=100$

32. If PANT = 51, then DOGS = 45
 PANT = $16+1+14+20=51$ DOGS = $4+15+7+19=45$

33. CAB = 12, FED = 30, HIDE = 52
 CAB = $3+1+2=6 \times 2=12$ FED = $6+5+4=15 \times 2=30$ HIDE = $8+9+7+5=29 \times 2=58$

MARCH 2020						
W	T	F	S	S	S	S
10	11	12	13	14	15	16
17	18	19	20	21	22	23
24	25	26	27	28	29	30
31						



SNS COLLEGE OF TECHNOLOGY

(An Autonomous Institution)

Approved by AICTE, New Delhi, Affiliated to Anna University, Chennai

Accredited by NAAC-UGC with 'A++' Grade (Cycle III) &

Accredited by NBA (B.E - CSE, EEE, ECE, Mech & B.Tech.IT)

COIMBATORE-641 035, TAMIL NADU

DEPARTMENT OF MATHEMATICS



34. HECK = 94410, DIG = 588, BIKE = **38124**
 BIKE = 2+1=3, 2=9-1=8, K=11+1=12, E=5-1=4

35. CROWN = DTRAS, BLEAK = CNHEP,
 STUMP = **TVXQU**

36. If GOAD = IQNF, WIND = **YKPE**

37. HRUT = FISA, UVCD = **STAB**

38. CONSCIOUSLY = PEBNDJEXNKM,
 SOIL = **NEJK**

39. NOIDA = STNIF then, NEERUT = **RJWZY**
 14 19 20 13 5 18 21 20 12 10 23 24 25

40. FORGET = DPPHCU, then DOCTOR = **BPAUMS**

41. DECEMBER = ERMBCEDE then, ERMBVEND = **NOVEMBER**

42. MENTAL = LNDEN OSUXBKM
 TEST = **SUDFRTSU**

43. TYPEWRITER = GBKVDIRGVI
 STENO = **HGVML** (opposite letters)



SNS COLLEGE OF TECHNOLOGY

(An Autonomous Institution)

Approved by AICTE, New Delhi, Affiliated to Anna University, Chennai

Accredited by NAAC-UGC with 'A++' Grade (Cycle III) &

Accredited by NBA (B.E - CSE, EEE, ECE, Mech & B.Tech.IT)

COIMBATORE-641 035, TAMIL NADU

DEPARTMENT OF MATHEMATICS



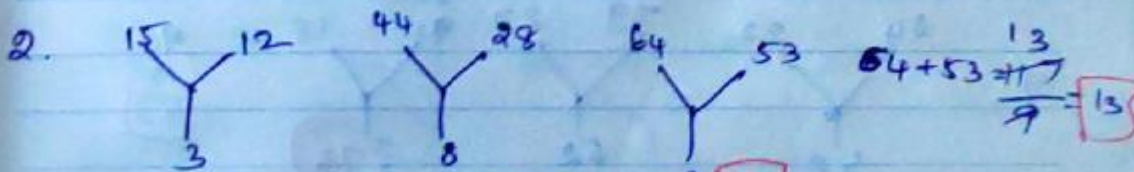
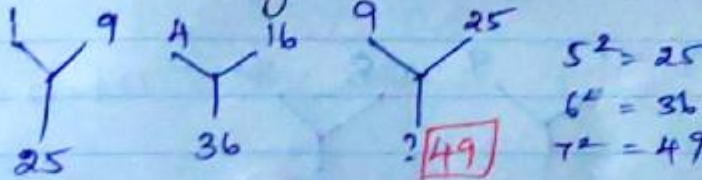
44. If MARKS = ZNEF, ARMS = ~~NEZF~~ **NEZF**

45. $\frac{BAT}{C} = \frac{DCV}{N}$, then $\frac{MAN}{N} =$ **OCP**

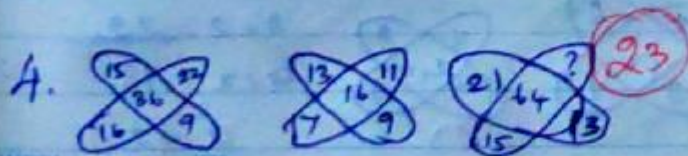
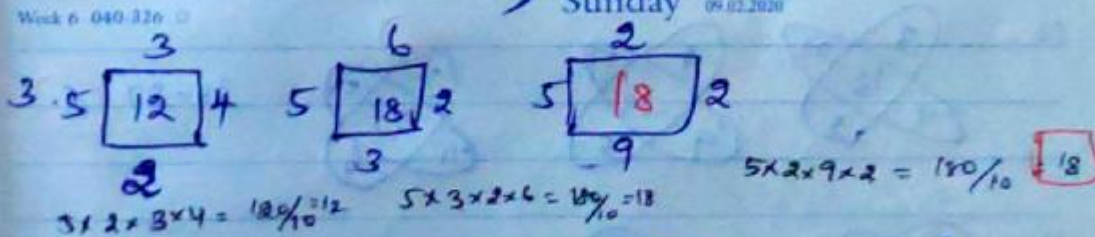
46. $\frac{CAT}{C} = \frac{CNANT}{N}$, then, $\frac{GOD}{C} =$ **GINOND**

Missing Numbers:

1. Find the missing No from the following.



9 Sunday 09.02.2020



DATE	1	2	3	4	5	6	7	8	9	10	11	12	13	14	15	16	17	18	19	20	21	22	23	24	25	26	27	28	29	30	31
MARCH																															

2020



SNS COLLEGE OF TECHNOLOGY

(An Autonomous Institution)

Approved by AICTE, New Delhi, Affiliated to Anna University, Chennai

Accredited by NAAC-UGC with 'A++' Grade (Cycle III) &

Accredited by NBA (B.E - CSE, EEE, ECE, Mech & B.Tech.IT)

COIMBATORE-641 035, TAMIL NADU

DEPARTMENT OF MATHEMATICS



Week 7 041-325 Monday 10.02.2020

5. $34 + 7 = 41$

6. $9 \times 30 = 39$

7. $3 + 6^2 = 36 + 9 = 45$
 $4 + 5^2 = 25 + 16 = 41$

8. $128 + 32 = \frac{160}{8} = 20$

9. $91 - \frac{18}{7} = 73$

10. $33 - 27 = 6$

11. $11 \times 2 = 22$
 $9 \times x = 18$
 $x = 2$



SNS COLLEGE OF TECHNOLOGY

(An Autonomous Institution)

Approved by AICTE, New Delhi, Affiliated to Anna University, Chennai

Accredited by NAAC-UGC with 'A++' Grade (Cycle III) &

Accredited by NBA (B.E - CSE, EEE, ECE, Mech & B.Tech.IT)

COIMBATORE-641 035, TAMIL NADU

DEPARTMENT OF MATHEMATICS



40. $12 - 9^2 = 12$

6-5-8, 9-6-8, 10-? -16

$6+8+7+4 = 25$
 $\sqrt{25} = 5$

$10+14+16+9 = 49$
 $\sqrt{49} = 7$

41. $2+3+4+5 = 14 \times 3 = 42$

1-30-3, 2-42-4, 3-?-5

$3+6+5+4 = 18$
 $18 \times 3 = 54$

42. $3^2+4^2+2^2 = 4+4+16+9 = 29$

3-33-2, 4-54-2, 3-?-5

$3^2+4^2+5^2+6^2 = 9+16+25+36 = 86$

50. $7 \times 4 = 28$
 $\frac{28}{9} = 19$

7-19-4, 9-?-3, 8-28-5

$9 \times 3 = 27$
 $\frac{27}{6} = 21$

51. $7-19-4, 9-?-3, 8-28-5$

Week 16 Sunday 16 02 2020

51. $A \times 3 \times -1 = -12$

2-3, 5-1, 4-3

30-5, -5-1, ?-1

52. $3^3+2^3 = 27+8 = 35$

3-2, 1-5, 3-4

126, ?

$3^3+4^3 = 27+64 = 91$

MARCH 2020

W	M	T	W	T	F	S
1	2	3	4	5	6	7
8	9	10	11	12	13	14
15	16	17	18	19	20	21
22	23	24	25	26	27	28
29	30	31				

2020



SNS COLLEGE OF TECHNOLOGY

(An Autonomous Institution)

Approved by AICTE, New Delhi, Affiliated to Anna University, Chennai

Accredited by NAAC-UGC with 'A++' Grade (Cycle III) &

Accredited by NBA (B.E - CSE, EEE, ECE, Mech & B.Tech.IT)

COIMBATORE-641 035, TAMIL NADU

DEPARTMENT OF MATHEMATICS



53. $\begin{matrix} 12 & \times 3 & 36 \\ & \times 3 & \\ & & 13 \end{matrix}$ $\begin{matrix} 13 & \times 1 & 13 \\ & \times 1 & \\ & & 13 \end{matrix}$ $\begin{matrix} 16 & \times 2 & 32 \\ & \times 2 & \\ & & 8 \end{matrix}$

54. $\begin{matrix} 11 & 12 \\ 6 & 9 \\ 78 \end{matrix}$ $\begin{matrix} 14 & 10 \\ 7 & 8 \\ ? \end{matrix}$ $14 \times 10 = 140$
 $7 \times 8 = 56$
 84

55. $\begin{matrix} 225 \\ 8 & 7 \end{matrix}$ $\begin{matrix} 49 \\ 3 & 4 \end{matrix}$ $\begin{matrix} 121 \\ 6 & ? \end{matrix}$ $6+5 = 11^2 = 121$
 $8+7 = 15^2 = 225$