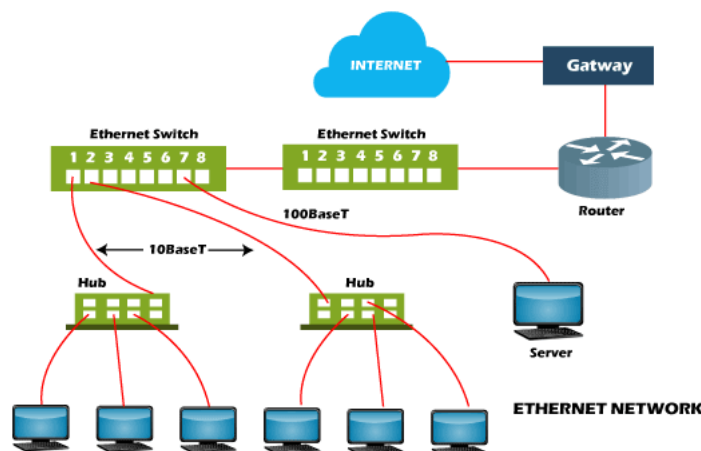




Ethernet (802.3)

Ethernet is the traditional technology for connecting devices in a wired local area network (LAN) or wide area network (WAN). It enables devices to communicate with each other via a protocol, which is a set of rules or common network language.

Ethernet is a type of communication protocol that is created at Xerox PARC in 1973 by Robert Metcalfe and others, which connects computers on a network over a wired connection. It is a widely used LAN protocol, which is also known as Alto Aloha Network. It connects computers within the local area network and wide area network. Numerous devices like printers and laptops can be connected by [LAN and WAN](#)



Different Types of Ethernet Networks

An Ethernet device with CAT5/CAT6 copper cables is connected to a fiber optic cable through fiber optic media converters. The distance covered by the network is significantly increased by this extension for fiber optic cable. There are some kinds of Ethernet networks, which are discussed below:

- **Fast Ethernet:** This type of Ethernet is usually supported by a twisted pair or CAT5 cable, which has the potential to transfer or receive data at around 100 Mbps. They function at 100Base and 10/100Base Ethernet on the fiber side of the link if any device such as a camera, laptop, or other is connected to a network. The fiber optic cable and twisted pair cable are used by fast Ethernet to create communication. The 100BASE-TX, 100BASE-FX, and 100BASE-T4 are the three categories of Fast Ethernet.
- **Gigabit Ethernet:** This type of Ethernet network is an upgrade from Fast Ethernet, which uses fiber optic cable and twisted pair cable to create communication. It can transfer data at a rate of 1000 Mbps or 1Gbps. In modern times, gigabit Ethernet is more common. This network type also uses CAT5e or other advanced cables, which can transfer data at a rate of 10 Gbps.

Advantages of Ethernet

- It is not much costly to form an Ethernet network. As compared to other systems of connecting computers, it is relatively inexpensive.



SNS COLLEGE OF TECHNOLOGY, COIMBATORE –35 (An Autonomous Institution)



DEPARTMENT OF COMPUTER SCIENCE AND ENGINEERING

- Ethernet network provides high security for data as it uses firewalls in terms of data security.
- Also, the Gigabit network allows the users to transmit data at a speed of 1-100Gbps.
- In this network, the quality of the data transfer does maintain.
- In this network, administration and maintenance are easier.
- The latest version of gigabit ethernet and wireless ethernet have the potential to transmit data at the speed of 1-100Gbps.

Disadvantages of Ethernet

- It needs deterministic service; therefore, it is not considered the best for real-time applications.
- The wired Ethernet network restricts you in terms of distances, and it is best for using in short distances.
- If you create a wired ethernet network that needs cables, hubs, switches, routers, they increase the cost of installation.
- Data needs quick transfer in an interactive application, as well as data is very small.
- In ethernet network, any acknowledge is not sent by receiver after accepting a packet.
- If you are planning to set up a wireless Ethernet network, it can be difficult if you have no experience in the network field.
- Comparing with the wired Ethernet network, wireless network is not more secure.
- The full-duplex data communication mode is not supported by the 100Base-T4 version.
- Additionally, finding a problem is very difficult in an Ethernet network (if has), as it is not easy to determine which node or cable is causing the problem.

Ethernet standards

There are different standards of Ethernet, which are discussed below with additional information about each of them.

Ethernet II / DIX / 802.3

A studied edition of Ethernet, Ethernet II, also called as DIX. The DIX stands for Digital, Intel, and Xerox. And, 802.3, which is rewritten by Digital Equipment Corp, Xerox, and Intel.

Fast Ethernet / 100BASE-T / 802.3u

Fast Ethernet (100BASE-T or 802.3u) is a communications protocol, which is usually supported by a twisted pair or CAT5 cable.

The 100BASE-T standards have two types. The 100BASE-T is the first standard that makes use of CSMA/CD.

Three different kinds of cable technologies are available with 100BASE-T.

1. 100BASE-T4: It is utilized for a network that requires a low-quality twisted-pair on a 100-Mbps Ethernet.
2. 100BASE-TX: It makes use of two-wire data grade twisted-pair wire, developed by ANSI 100BASE-TX, which is also called 100BASE-TX and 100BASE-X.
3. 100BASE-FX: It uses 2 stands of fiber cable and developed by ANSI.



SNS COLLEGE OF TECHNOLOGY, COIMBATORE –35
(An Autonomous Institution)
DEPARTMENT OF COMPUTER SCIENCE AND ENGINEERING





SNS COLLEGE OF TECHNOLOGY, COIMBATORE –35
(An Autonomous Institution)
DEPARTMENT OF COMPUTER SCIENCE AND ENGINEERING

